



# *What Do the Facts Say? Using Institutional Data to Tell UC's Story*

Pamela Brown

Vice President of institutional Research and Academic Planning  
(iRAP)

# IRAP Mission and Values

- **We provide**

evidence-based analyses and reports that inform and shape

university management,

strategic planning,

institutional policy, and

decision support.

- **We value**

accuracy

collaboration

creativity

expertise

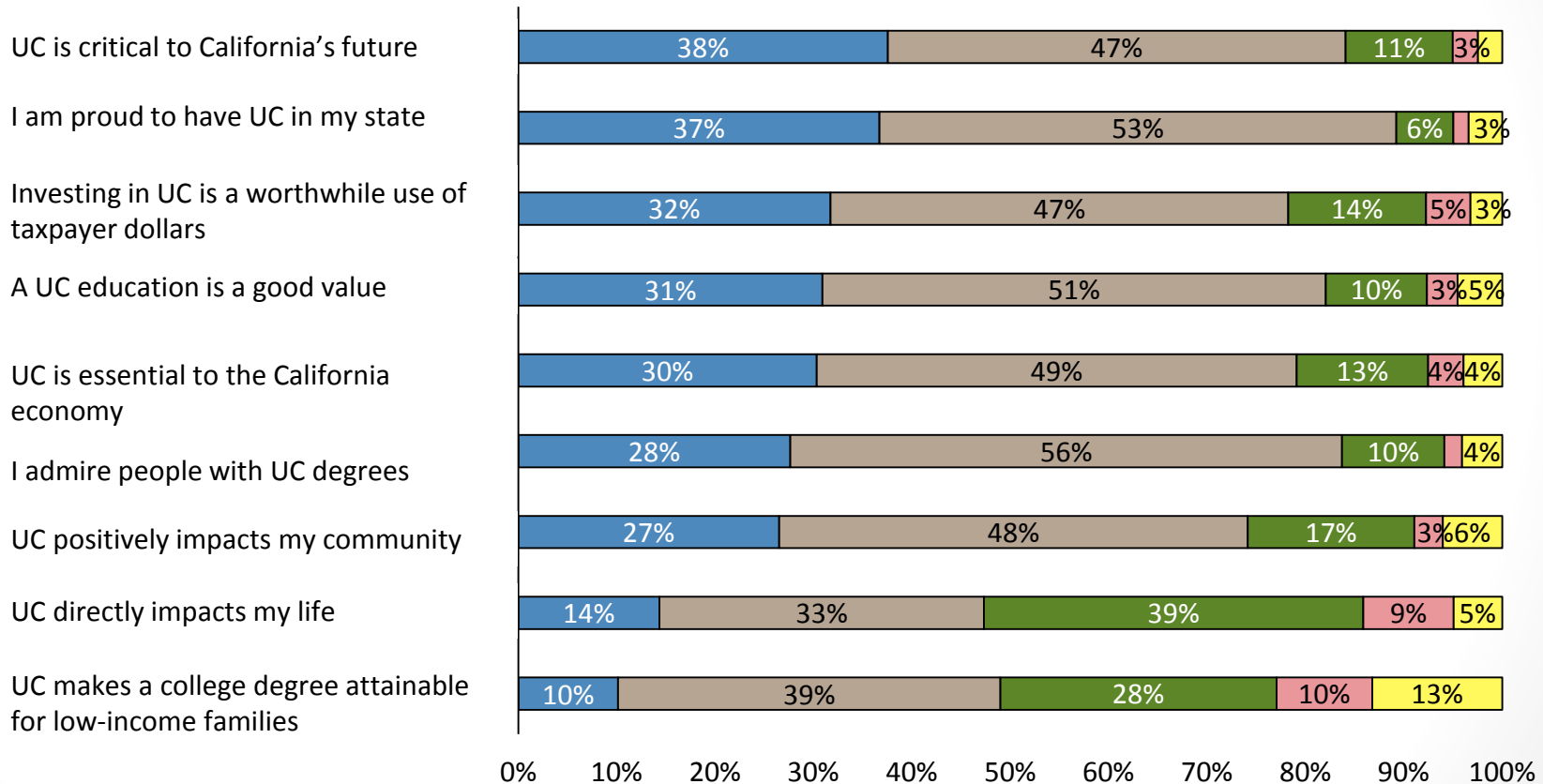
# Together IRAP and ITS can...

- **Together, IRAP and ITS can create a decision support environment that**
  - **Tells the story of UC**
  - **Is inviting and easy to understand and us**
  - **Leads the nation on how to communicate the value of public education**

# Value Statements

CA Voters, Benchmarking Questions

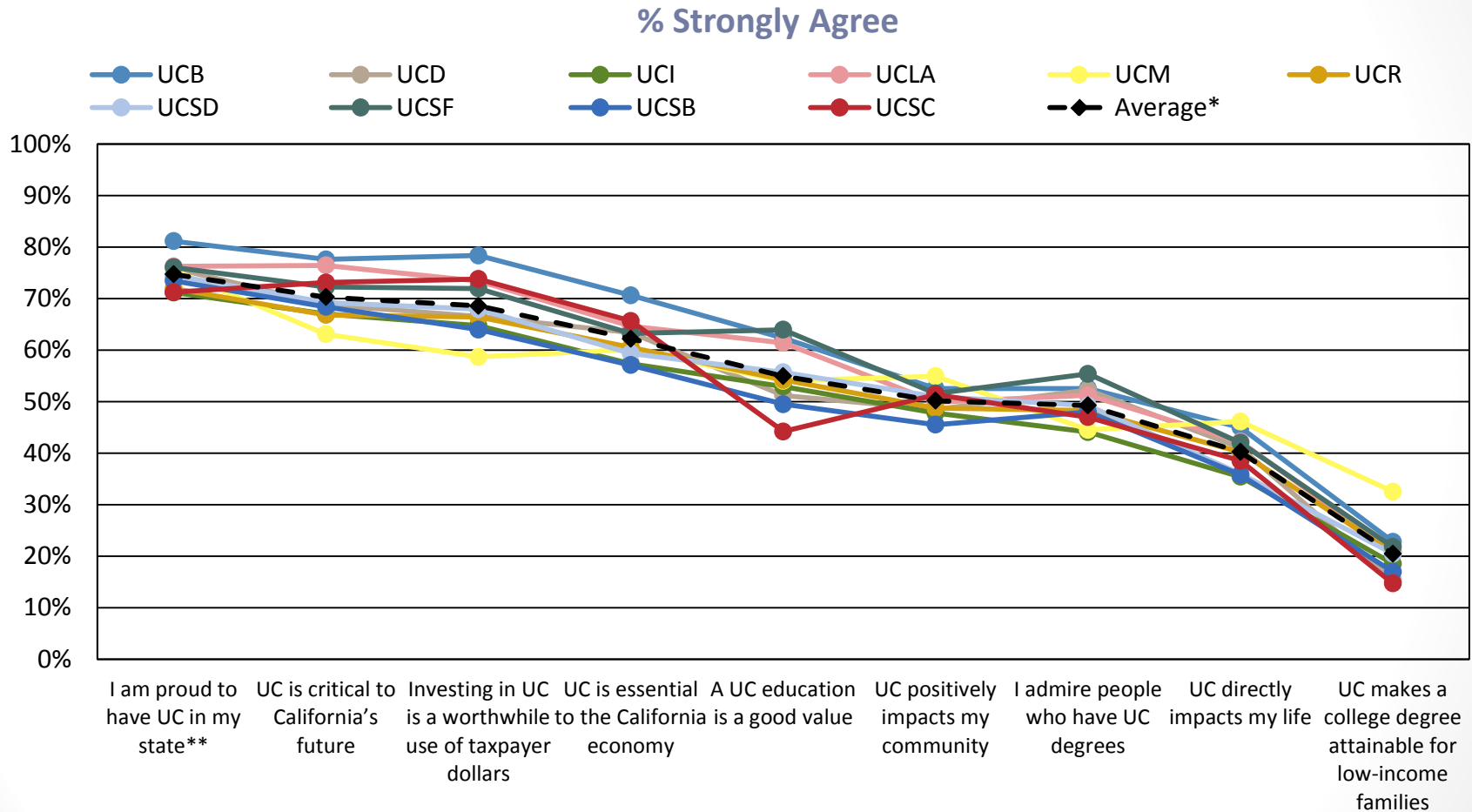
Strongly Agree   Agree   Disagree   Strongly Disagree   Don't Know



Question Wording: I'm going to read you a few statements and I'd like you to tell me your level of agreement with each of the following: Strongly Agree, Agree, Disagree, Strongly Disagree, Don't Know.

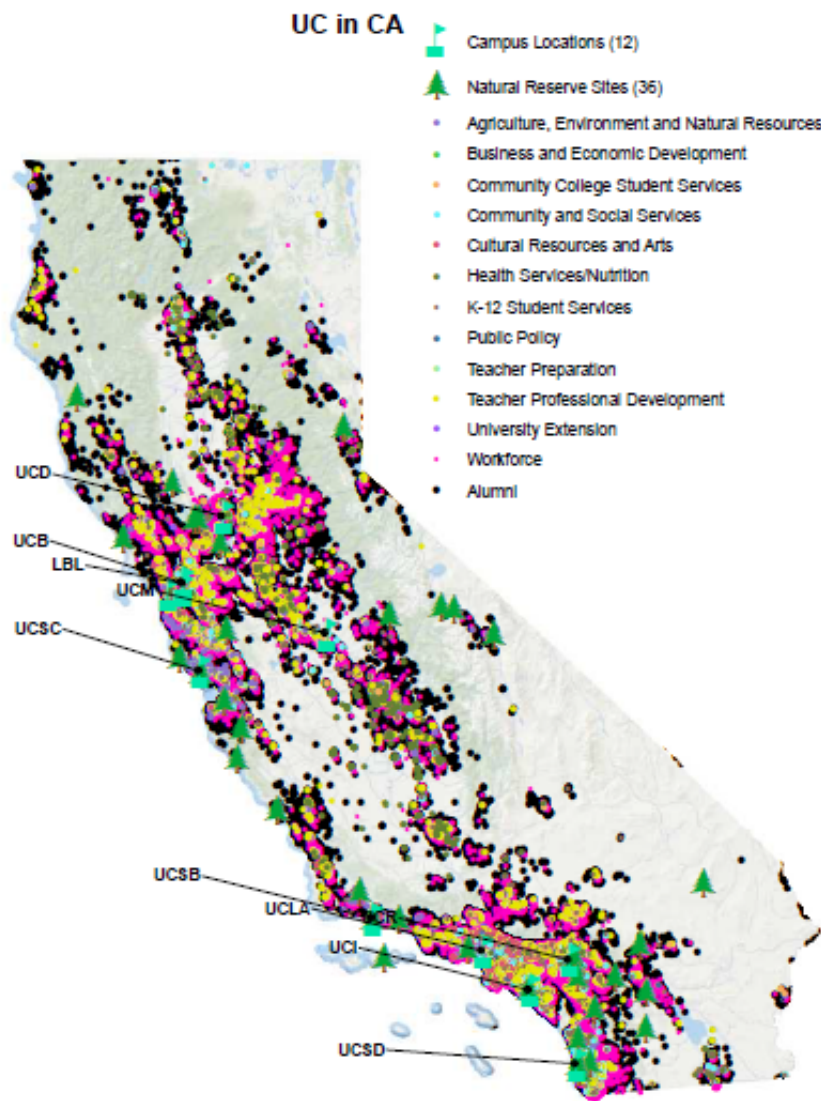
# Value Statements

Alumni, Benchmarking Questions



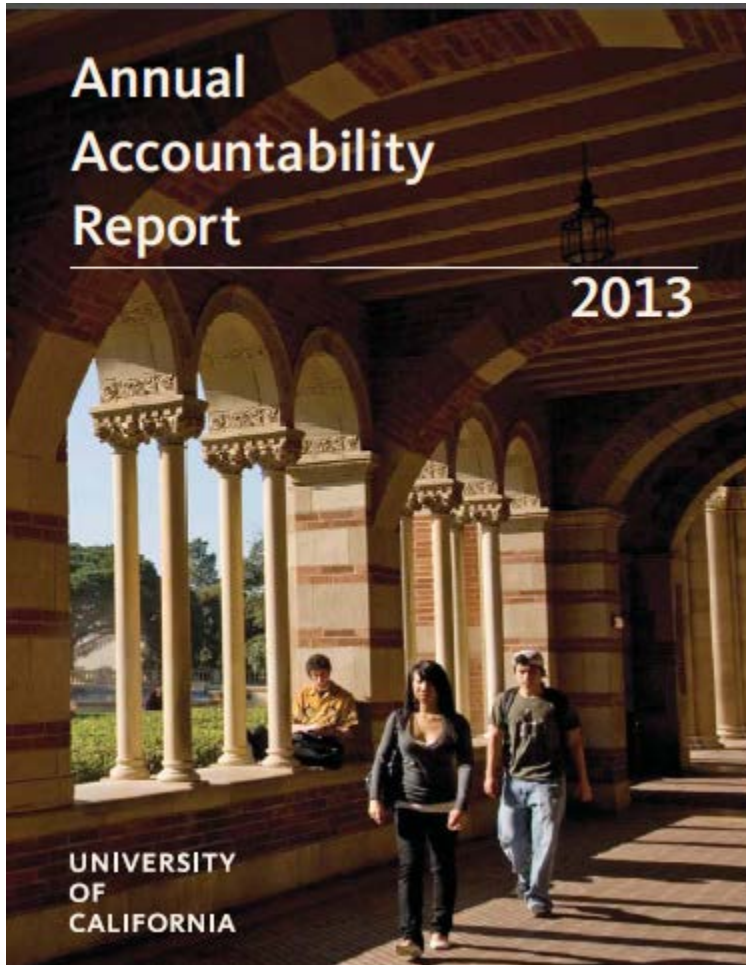
Question Wording: I'm going to read you a few statements and I'd like you to tell me your level of agreement with each of the following: Strongly Agree, Agree, Disagree, Strongly Disagree, Don't Know.

# UC directly impacts my life

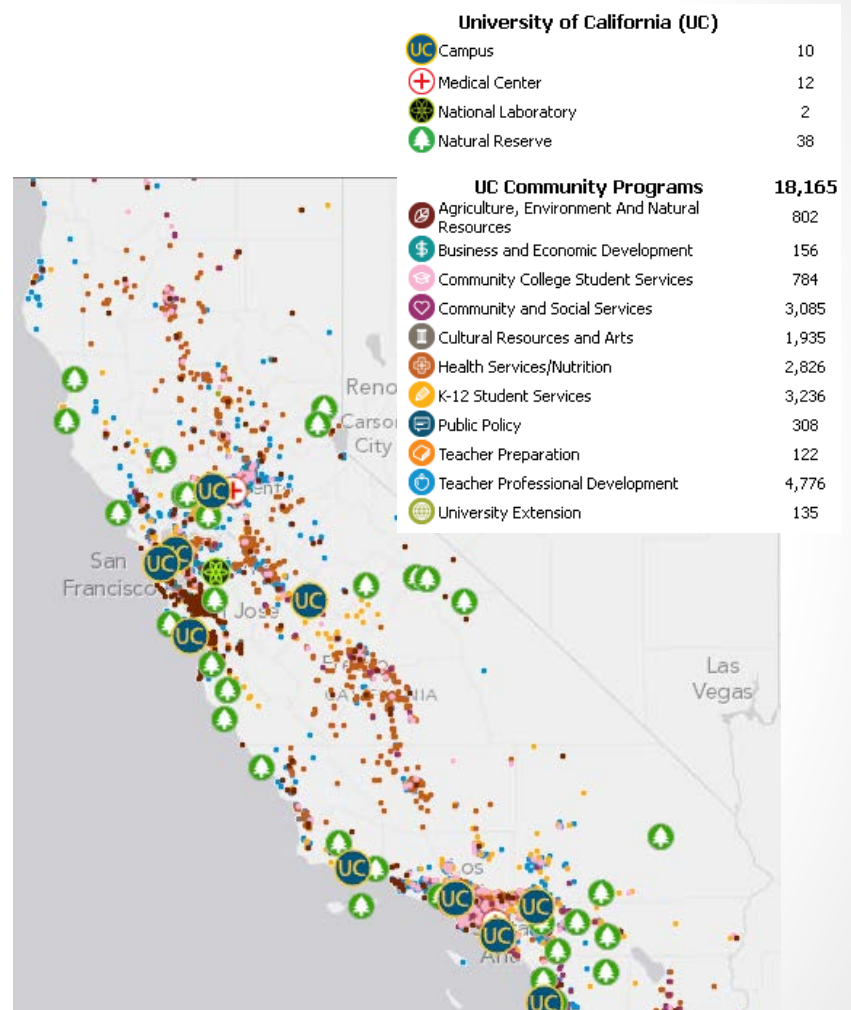


- Immediate UC community
  - 244,000 students,
  - 138,000 faculty and staff,
  - over 61,000 retirees, and
  - over 1.6 million living alumni
- Broader UC community includes many more, such as patients at UC's hospitals
  - 3.8 million outpatient clinic visits,
  - over 147,000 inpatient days and
  - 290,000 emergency room visits a year
- Other impacts, including but not limited to...
  - farmers and agriculturalists with UC Cooperative Extension agents,
  - researchers using NRS,
  - participants in community programs
  - attendees to concerts, movies and lectures at UC and visit its museums, libraries, and botanical garden.

# UC directly impacts my life



<http://accountability.universityofcalifornia.edu/>



<http://arcgis.cisr.ucsc.edu/ucop/>

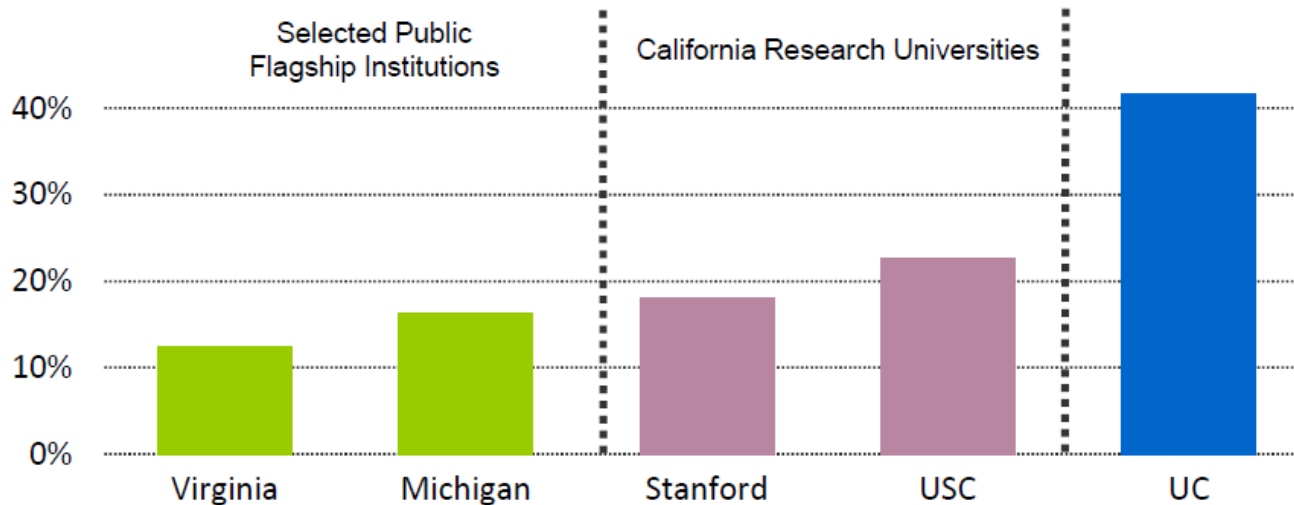
# UC makes a college degree attainable for low-income families

**UC enrolls a higher proportion of Pell grant recipients than comparable research universities.**

Figure 2.1 Pell grant recipients

UC and selected peers

Fall 2011 (most recent year available for peer data)



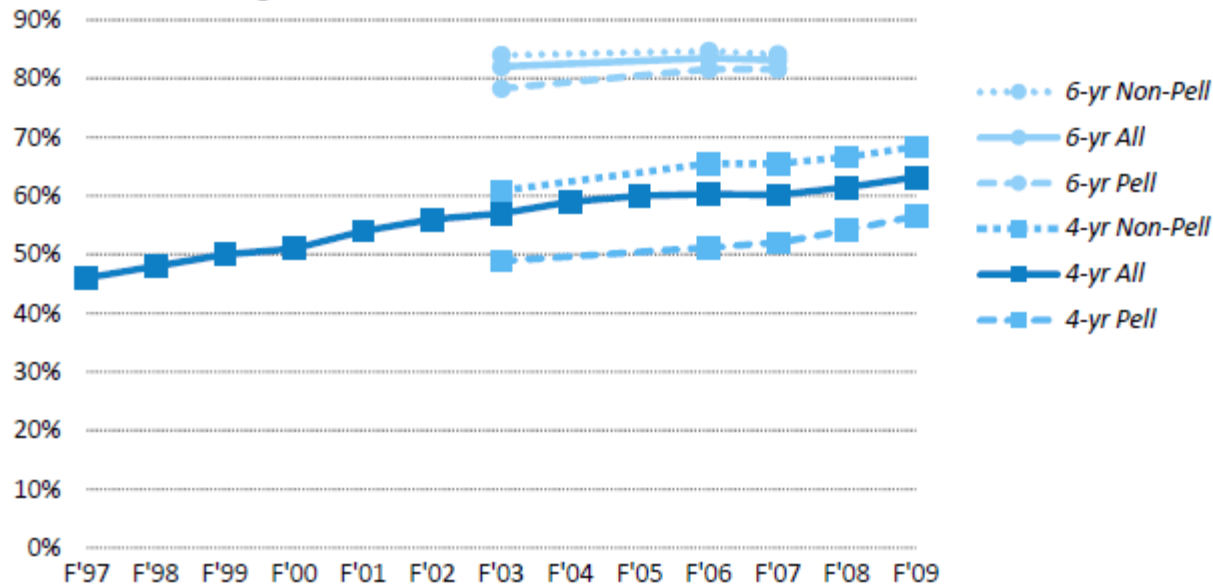
Source: IPEDS



# UC makes a college degree attainable for low-income families

Four-year freshman graduation rates have improved over time, with 63 percent of the fall 2009 cohort graduating in 4 years. Though a gap between Pell recipients and non-Pell students exists at the four-year mark, it is nearly eliminated at the six-year mark.

Figure 3.1 Freshman 4- and 6-year graduation rates  
Universitywide  
Fall 1995-2009 entering freshmen



Source: UC Corporate Student System<sup>†</sup>

Thank you....